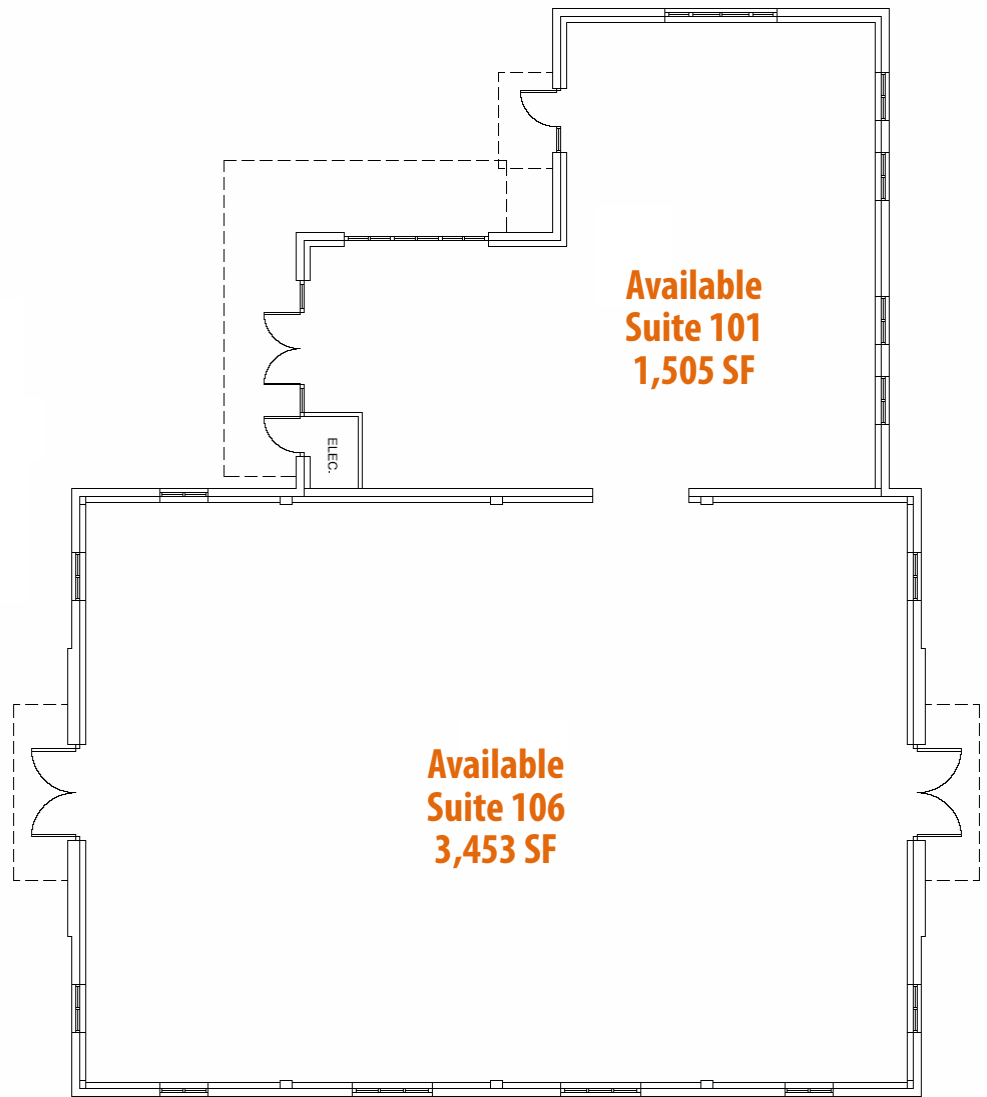


900 SE Commerce Avenue fronts SE Commerce Avenue on the east and SE 9th Street on the south. SE Commerce Avenue is the main arterial and runs south-north from 199th Street, and SE 9th Street is one of the main entrances to the Center Park Pavilion. This building can be divided into two individual suites of varying size, or occupied as one suite.



Agent Information

Steve Mack
360.619.2999
stevem@cbcworldwidenw.com
<http://www.cbcworldwide.com/cbcagents/EDG7378451.html>

Coldwell Banker Commercial Jenkins & Associates
300 West 15th Street, Suite 201
Vancouver, WA, 98660
Office 360.823.5131 | Fax 360.823.5138